

I AM ACTIFY SPINFIRE

Investigate CAD & Expose Product Data



Product Visualization

Beyond CAD Viewing

SpinFire Ultimate is an all new CAD Viewer. A modern user interface, many performance improvements, enhanced functionality and innovations making SpinFire Ultimate a leading CAD visualization tool.

Performance, Speed and Ease of use:

SpinFire Ultimate supports fully shattered assemblies, making the handling of large assemblies far easier and more efficient. The modern 64-bit architecture provides more effective memory management and an enhanced capability to open large CAD files. Not only can SpinFire Ultimate handle large assemblies, it can also load it with great speed. (E.g. a 300 mb+ file loads in mere seconds.) SpinFire Ultimate has been redesigned with an intuitive user interface to improve user adoption and user experience.



Gain Insight to Product Data:

Investigate CAD models, smart dimensioning, section and exploded views. Advanced analysis functions for draft angles, model comparison, and model weight, volume, surface area calculations and much more.



Design Feedback & Team Collaboration

Capture user views to effectively communicate feedback and change requests. Mark-up models using red-lining, notes and annotations. Share models across internal/external teams with an .ACT3D neutral and compressed CAD file format.



Operational Efficiency

SpinFire Ultimate is a cost effective CAD viewer, multi CAD support to handle popular CAD file formats. Low training requirement, easy to use, high user adoption. Improved decision making through product data visibility and reduced errors.

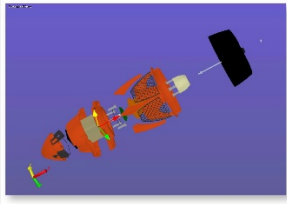
Benefits of SpinFire Ultimate

People who benefit from the insight and investigation capabilities of SpinFire Ultimate include project managers, development teams, engineers, procurement, sales, supply chain and quality assurance teams. CAD visualisation allows companies to:

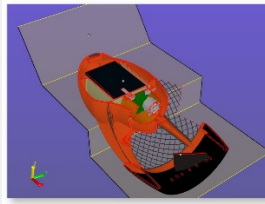
- Quickly gain accurate information direct from the CAD model
- Cost effectively investigate popular CAD file formats
- Reduce development errors and costs
- Enrich communication and collaboration between global teams
- Provide visibility to product data needed for better business decision-making

SpinFire Ultimate Features:

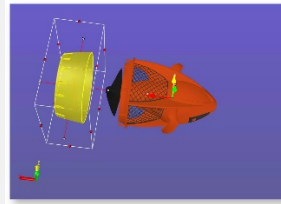
CAD Visualisation



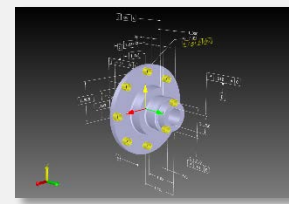
Exploded Assembly



Section Views

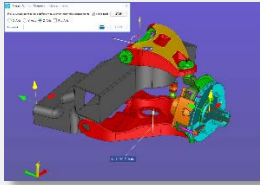


Transformation by
Handles

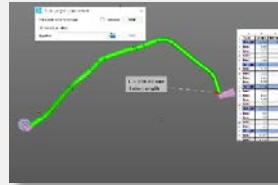


Product Manufacturing
Information

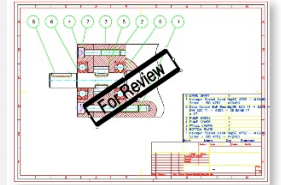
Measure & Mark-up



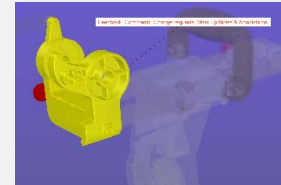
Smart Dimensioning



Tube Length

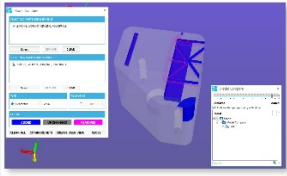


2D Stamps

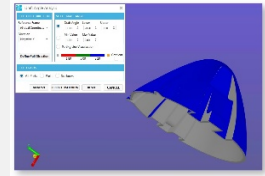


Notes & Annotations

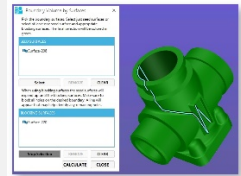
Model Analysis



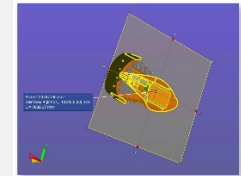
Model Compare



Draft Angle Analysis



Volume of a Void



Cross-section Profile
Area, Perimeter &
Centroid

Why SpinFire Ultimate?

Actify SpinFire Ultimate is a revolutionary CAD Viewer with multi-CAD support for 3D and 2D viewing, measuring, mark-up and other investigative functions. SpinFire is able to convert CAD data into a compact, lightweight and neutral format for sharing with internal and external teams. Gain insight from your product data. Actify's SpinFire CAD Viewer will fulfil the Product Visualization needs of your organization regardless of its size.

About Actify:

Actify, Inc. is 100% focussed on delivering solutions that revolutionises the way product data and product information is managed and shared across the enterprise and throughout the development life cycle.

Actify understands product data, from the original designer's product definition within engineering to disparate product data across a manufacturer's extended enterprise.

Actify have been providing product visualization software to the discrete manufacturing industry for more than 15 years overcoming the challenge of sharing and communicating engineering type documents across the extended enterprise or supply chain. Today, Actify provides a unified platform that significantly speeds up enterprise data access everywhere and overcome the challenge of sharing engineering type data.